

***advanced FLOW engineering***

**Instruction Manual P/N: 46-10072**

---

Make: **DODGE** Model: **RAM 2500/3500** Year: **2007.5-2015** Engine: **L6-6.7L (td)**



- Please read the entire instruction manual before proceeding.
- Ensure all components listed are present.
- If you are missing any of the components, call customer support at 951-493-7100.
- Ensure you have all necessary tools before proceeding.
- Do not attempt to work on your vehicle when the engine is hot.
- Disconnect the negative battery terminal before proceeding.
- Retain factory parts for future use.

Label	Qty.	Description	Part Number
A	1	Manifold, Intake	05-60088
B	2	Plug, Hex Hd Socket: 1/8"	03-50029
C	1	Plug, Hex Hd Socket: 3/8"	03-50158
D	2	Screw, Socket Hd: M8 x 16	03-50171
E	4	Screw, Hex Socket: M8 x 30	03-50225
F	1	Screw, Hex Socket: M8 x 90	03-50257
G	1	Screw, Hex Socket: M8 x 130	03-50256
H	8	Washer, Flat, AN, S/S	03-50228
I	1	Gasket	05-60146
J	5	Zip Tie, 12"	05-60167
K	1	Plug, Crossover Tube	05-60136

Installation will require the following tools:

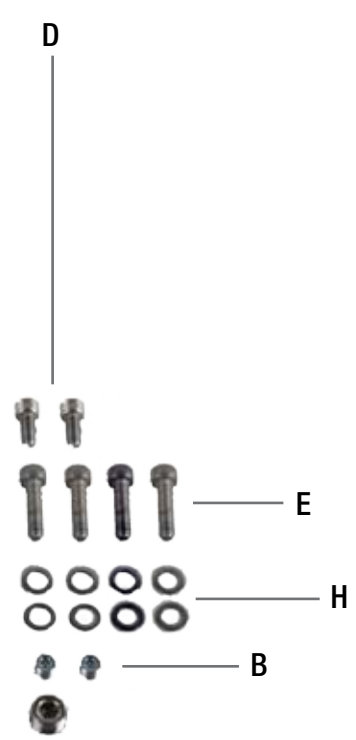
8mm socket, 10mm socket, 11mm deep socket, 10mm deep socket, T15 nut driver, 3/16" allen key, 6mm long allen key, 8mm allen key, 3/8" drive torque wrench, teflon sealant tape, flat head screw driver, small ratchet drive extension, medium ratchet drive extension, ratchet wrench, electrical tape.



A



K



D

E

H

B



G



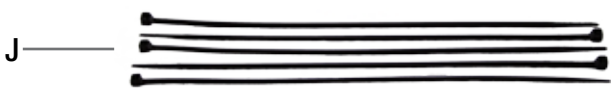
F



C



I



J



**Refer to Figure A for step 1**

Step 1: Using 8mm socket remove engine cover.

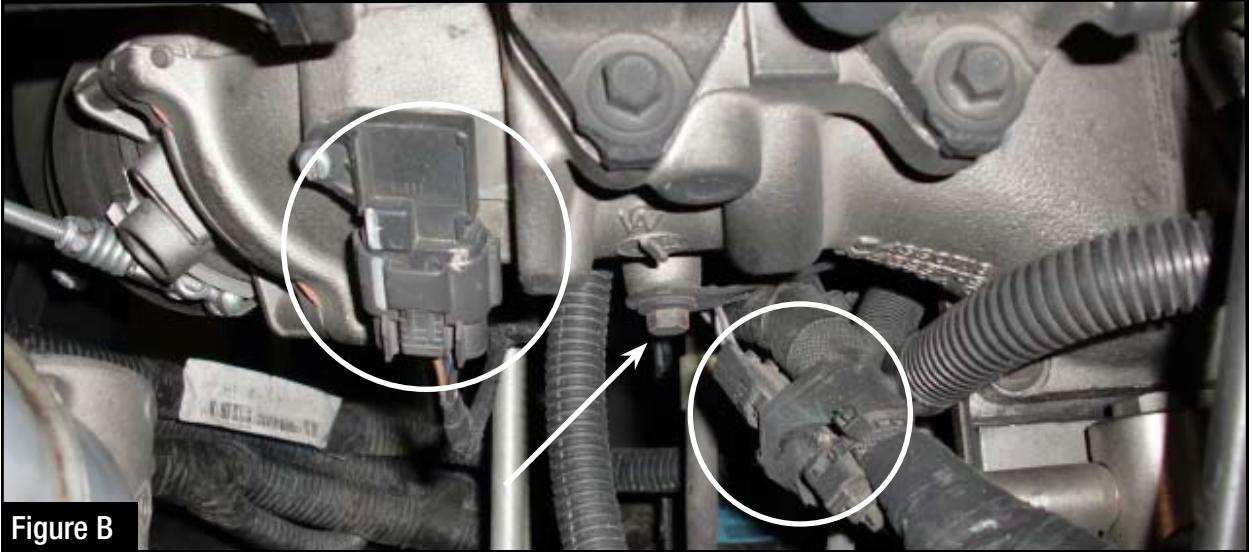
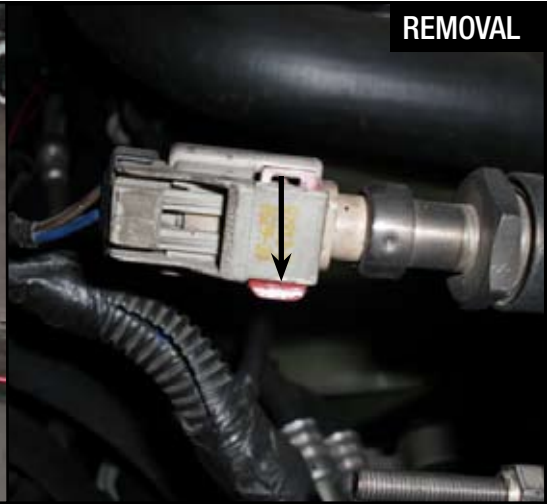


Figure B

**Refer to Figure B for steps 2-3**

Step 2: Remove the 4 connectors.

Step 3: Using a 10mm socket remove the M8 screw on the back of the manifold.

**NOTE:** Two of the connectors have safety clips that need to be released prior to removal.





**Refer to Figure C for steps 4-5**

Step 4: Remove the EGR crossover tube using a 11mm deep socket for the 2 clamps and a 8mm socket for the small bolt under the tube.

Step 5: Be sure not to lose the gaskets on the ends of the EGR crossover tube because one will be reused on the block off plate.

REMOVAL



Figure D

**Refer to Figure D for step 6**

Step 6: Remove the M8 screw holding the engine oil dip stick in place.



### **Refer to Figure E for steps 7-8**

Step 7: Using a 10mm deep socket remove the nut holding the wiring harness onto the manifold. Then remove the stud out of the manifold, which will be reused in the new aFe manifold.

Step 8: Remove the six M8 screws mounting the manifold to the engine.





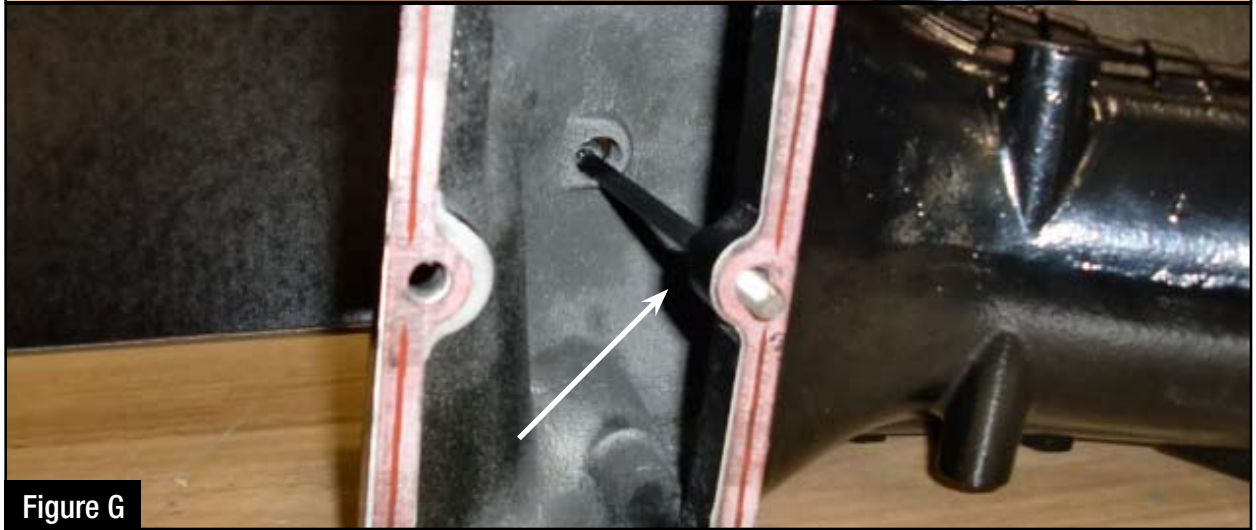
**Figure F**

**Refer to Figure F for steps 9-11**

Step 9: Remove the MAP sensor using T15 nut driver.

Step 10: Remove stock gasket away from the grid heater. It will be replaced with a new gasket. *(May require a scraper or scotch bright to clean sealing surfaces.)*

Step 11: Ensure all plugs are wrapped with teflon tape before installation.



**Refer to Figure G for steps 12-14**

- Step 12: Install MAP sensor using the same T15 bolt removed from the stock manifold install small plugs using a 3/16" allen key or sensors into the back of the new aFe manifold and tighten.
- Step 13: Install the gasket provided onto the bottom of the manifold using sticky side.
- Step 14: Install the M8 x 30 screw with washer in the middle mounting hole, using the long 6mm allen key to hold it in place, install the manifold onto the vehicle and start this screw.



Figure H

**Refer to Figure H for step 15**

Step 15: Before starting the other (5) screws, only **loosen** (do not remove) the coupler on the intercooler tube to the intercooler.





Figure I

**Refer to Figure I for steps 16-21**

Step 16: Install coupler onto the aFe manifold, do not tighten.

Step 17: Start the rest of the M8 screws manifold mounting bolts by hand.

Step 18: Using the 6mm allen key socket and torque wrench torque to 35 ft. x lbs.

Step 19: Using 8mm allen key install the 3/8" plug on top of the manifold.

Step 20: Using 10mm socket install the M8 x 16 screw and washer through oil dipstick and mount on top of the manifold and tighten.

Step 21: Using the extension and 11mm deep socket retighten couplers onto manifold and intercooler.



**Figure J****Refer to Figure J for steps 22-25**

Step 22: Using 6mm allen key install the M8 x 16 screw and washer on the back of the manifold to mount the wiring harness.

Step 23: Reconnect the MAP sensor.

Step 24: Using a 10mm deep socket, install the stud that was removed from the stock manifold into the front of the aFe manifold.

Step 25: Install wiring harness and nut onto stud and hand tighten.

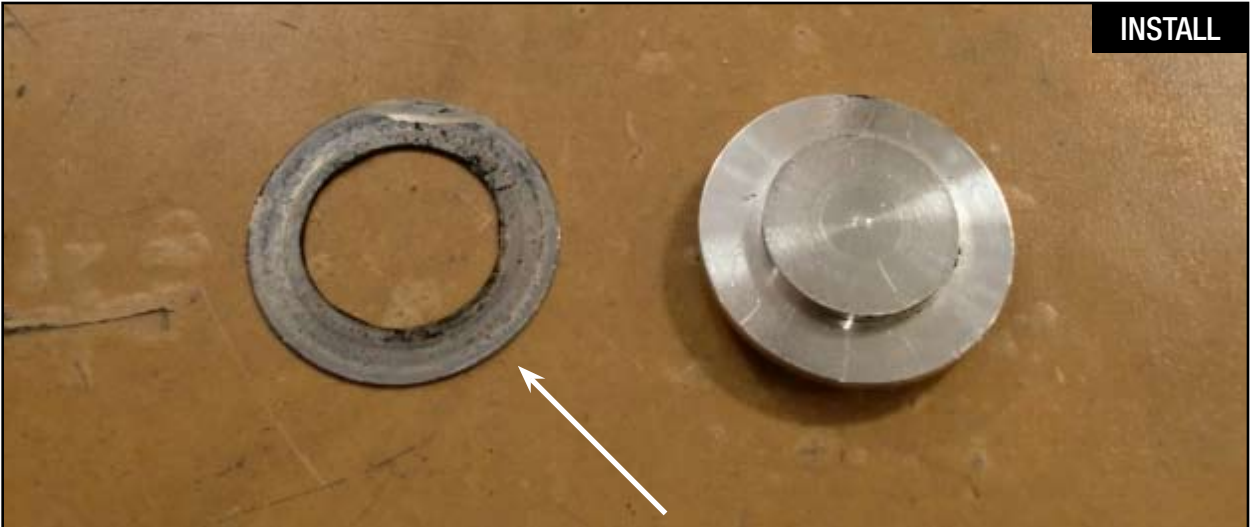


Figure K

**Refer to Figure K for step 26**

Step 26: Using the metal gasket (from step 5) and a 11mm deep socket install EGR crossover tube plug and tighten clamp.



INSTALL



Figure L

**Refer to Figure L for steps 27-29**

Step 27: Using electrical tape, seal all of the connectors (3) that are not going to be used anymore to prevent any water damage.

Step 28: Follow instructions from your electronic tune module regarding connectors final install status for EGR delete modification.

Step 29: Using the zip ties provided tie down loose connectors.





Figure M

**Refer to Figure M for step 30**

Step 30: Install is now complete.



Page left blank intentionally



aFe Power Hat



P/N: 40-10114 S/M  
P/N: 40-10115 L/XL

aFe Key Chain



P/N: 40-10103

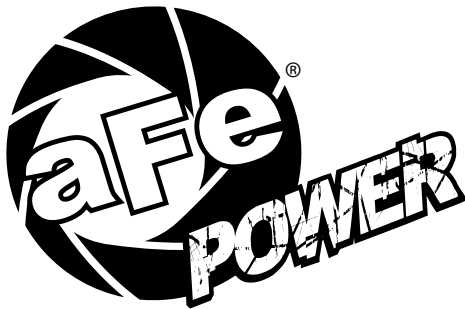
# Warranty

## General Terms:

- aFe warrants their products to be free from manufacturer's defects due to workmanship and material.
- This warranty applies only to the original purchaser of the product and is non-transferrable.
- Proof of purchase of the aFe product is required for all warranty claims.
- Warranty is valid provided aFe instructions for installation and/or cleaning were properly followed.
- Proper maintenance with regular inspections of product is required to insure warranty coverage.
- Damage due to improper installation, abuse, unauthorized repair or alteration is not warranted.
- Incidental or consequential damages or cost, including installation and removal of part, incurred due to failure of aFe product is not covered under this warranty.
- All warranty is limited to the repair and/or replacement of the aFe part. To request Return Goods Authorization ("RGA"), email [RGA@afepower.com](mailto:RGA@afepower.com) or call (951)493-7100. Upon receipt of the RGA, you must return the product to the address provided in the RGA, freight prepaid and accompanied with a dated proof of purchase and the RGA. Upon receipt of the defective product and upon verification of proof of purchase, aFe will either repair or replace the defective product within a reasonable time, not to exceed thirty days.

<b>Product Category</b>	<b>P/N Prefix</b>	<b>Warranty duration</b>
Direct OE Replacement Filters	10, 11, 30, 31, 71, 73	Life of the vehicle
Racing Filters	18	1 year
Universal	21, 24, 72	2 years
Air Intake Systems	50, 51, 54, 55, 75	2 years
Exhaust Systems	49	2 years
Intercoolers & Intercooler Tubes	46-2	2 years
Intake Manifolds	46-1	2 years
Differential Cover/Transmission Pan	46-7	Life of the vehicle
Exhaust Manifolds	46	2 years
Throttle Body Spacers	46-3	2 years
Fluid Filters	44	90 days
Pre-Filters	28	2 years
Heavy Duty OE Replacement	70	2 years
PowerSports OE Replacement	81, 87	2 years
PowerSports Intake Systems	85	2 years

No other warranty expressed or implied applies nor is any person or advanced FLOW engineering authorized to assume any other warranty. Some States do not allow the exclusion or limitation of incidental or consequential damages or do not allow limitations on how long an implied warranty lasts, so the above limitations or exclusions may not apply to you. This warranty gives you specific legal rights, and you may also have other rights which vary from State to State.



***advanced FLOW engineering, inc.***

252 Granite Street Corona, CA 92879

TEL: 951.493.7100 • TECH: 951.493.7100 x23

E-Mail: [Tech@aFepower.com](mailto:Tech@aFepower.com)