



FITTING INSTRUCTIONS

Part Number: **4480010**
Product Description: **ROCK SLIDERS**
Suited to vehicle/s: **2021 FORD BRONCO**

WARNING

NOTE THE FOLLOWING:

- ◆ This product must be installed exactly as per these instructions using only the hardware supplied.
- ◆ Do not use this product for any vehicle make or model, other than those specified by ARB.
- ◆ This product or its fixing must not be modified in any way.
- ◆ The installation of this product may require the use of specialized tools and/or techniques
- ◆ It is recommended that this product is only installed by trained personnel
- ◆ These instructions are correct as at the publication date. ARB Corporation Ltd. cannot be held responsible for the impact of any changes subsequently made by the vehicle manufacturer
- ◆ During installation, it is the duty of the installer to check correct operation/clearances of all components
- ◆ Work safely at all times
- ◆ Unless otherwise instructed, tighten fasteners to specified torque

ARB 4x4 ACCESSORIES

Corporate Head Office

42-44 Garden St
Kilsyth, Victoria
AUSTRALIA 3137

Tel: +61 (3) 9761 6622
Fax: +61 (3) 9761 6807

Australian enquiries
North & South American enquiries
Other international enquiries

sales@arb.com.au
sales@arbusa.com
exports@arb.com.au

www.arb.com.au

GENERAL CARE AND MAINTENANCE



By choosing an ARB Rock Slider, you have bought a product that is one of the most sought after 4WD products in the world. Your Rock Slider is a properly engineered, reliable, quality accessory that represents excellent value. To keep your Rock Slider in original condition it is important to care and maintain it following these recommendations:

- It is recommended that following exposure to salt, mud, sand or other contaminants exposed surfaces should be thoroughly cleaned with wash and wax type suds solution.
- As part of any Pre Trip Preparation, or on an annual basis, it is recommended that a thorough visual inspection of the step and rail and surrounding components is carried out, making sure that all bolts are torqued to the correct specification. Also check that nearby wiring and plumbing are free of damage. Replace any components as necessary. This service can be performed by your local authorized ARB Stockist.

REQUIRED TOOLS FOR FITMENT OF PRODUCT:

METRIC SOCKET SET	ALLEN KEY SET
TORQUE WRENCH 9-77Nm	PROTECTIVE FILM
IMPACT WRENCH	LIFT TABLE
ANGLED WRENCH	

HAVE AVAILABLE THESE SAFETY ITEMS WHEN FITTING PRODUCT:

Protective eyewear		Hearing protection	
--------------------	---	--------------------	---

NOTE: 'WARNING' notes in the fitting procedure relate to OHS situations, where to avoid a potentially hazardous situation it is suggested that protective safety gear be worn or a safe work procedure be employed. If these notes and warnings are not heeded, injury may result.

FASTENER TORQUE SETTINGS:

SIZE	Torque Nm	Torque lbft
M6	9Nm	7lbft
M8	22Nm	16lbft
M10	44Nm	32lbft
M12	77Nm	57lbft

PARTS LISTING			
APPLICATION.	PART NO.	QTY	DESCRIPTION
FITTING KIT BOXED	4655122	1	WELD ASM ROCK-S LH SUIT BRONCO
	4655123	1	WELD ASM ROCK-S RH SUIT BRONCO
FITTING KIT BAGGED	3195081	6	NUT PLATE ASSY M12x1.75 600mm
	4581011	14	WASHER FLAT M12x27x4 ZP
	4584377	4	WASHER FLAT M12x30x5 ZNS480
	6151046	1	WASHER FLAT M6 ZNS480
	6151207	1	BOLT HXHD M6x1.0x25 PC8.8 TZP480
	6151255	10	SCREW HXHD M12x1.75x40 PC8.8 ZP
	6151377	2	BOLT U M12x1.75x(175x120) PC8.8 TZP
	6151553	1	NUT CAGED M8 3.3-4.7 PC8.8 BTZP480 1238-C
	6151574	4	NUT HEX NYLOC M12x1.75 TZP480
	6151428	4	NUT FLANGE M12x1.75 PC8.8 SERRATED
	6151596	1	P CLIP 19MM
	6151715	1	NUT CAGED M6 3.6-4.5 836-D
	665051	2	TAPE RIB WINDOW @ 500MM
	6821178	8	CABLE TIE4.8 X 200MM

FITTING PROCEDURE

IMPORTANT NOTE: These instructions apply to FORD BRONCO.



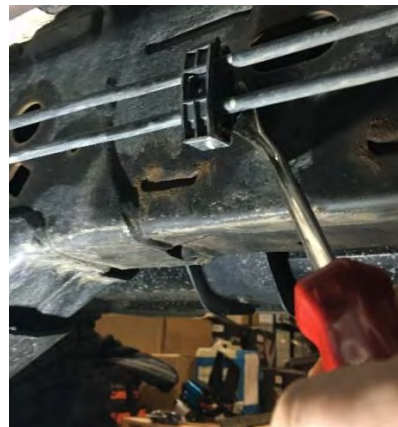
1. If fitted, remove the factory side steps.



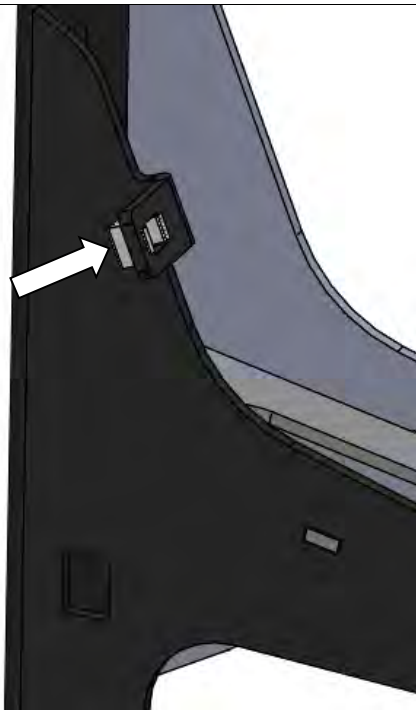
2. Remove two nuts off of front body mount.
3. If packer plate is installed from factory re-fit when installing sliders.



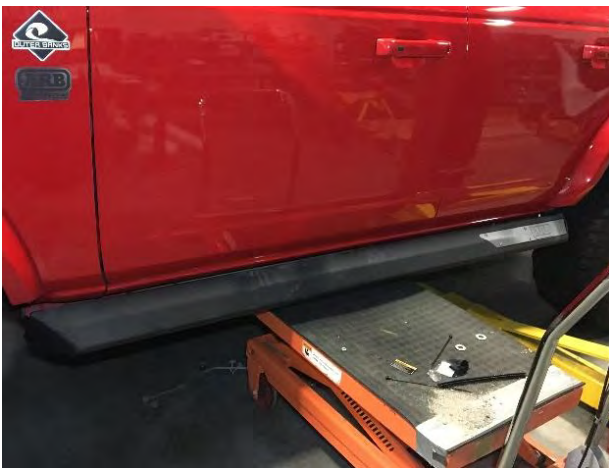
4. Using a body clip tool, loosen the wiring harness from the length of the left side frame rail. On the inboard side of the left frame rail, also disconnect the brake lines in the rear.



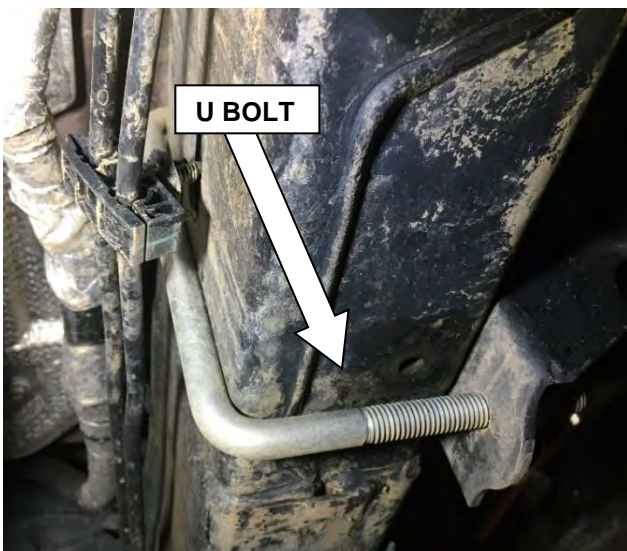
- 5.



6. Insert M6 cage nut into rear mount of left slider.



7. Using a lift table or a friend, lift the sliders into position and fasten the two body mount nuts onto the studs. Leave loose for now.

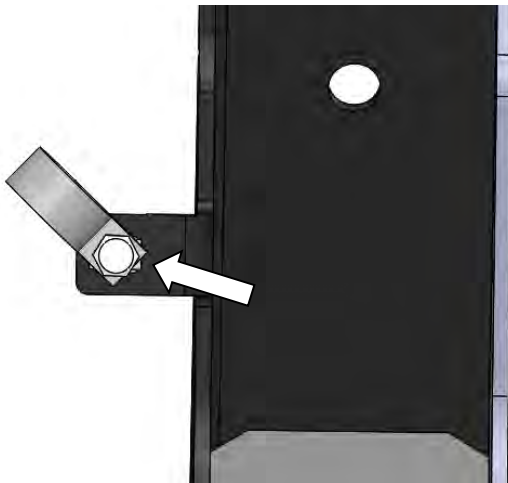


8. Use the rubber tape to cover the back of the u-bolt and secure the ends with cable ties as shown.
9. Moving to the rear, slide one of the u-bolts under the brake lines and over the frame.






- Using 2x M12 nuts and washers, fasten the slider to the u-bolt. Leave loose for now.



- Using P-Clip provided, attach the wiring harness with an M6x25 bolt and washer to the rear mount so that it can't rub

 M6 - 9 Nm.



- With both front and rear loosely attached to the vehicle, move to the middle mount. Bend two nut wands as shown, if lowest middle mount doesn't have a weld nut, use a third nut wand on the lowest position.

- Insert nut wands into chassis holes shown.

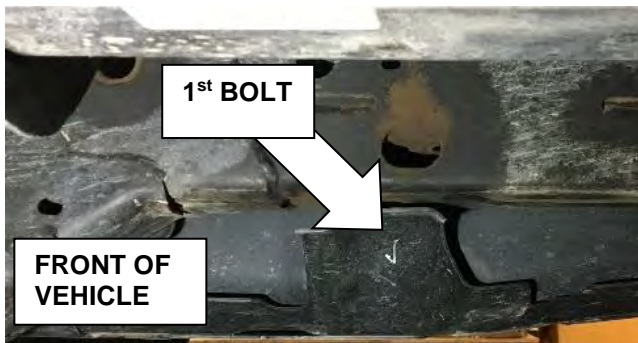




14. Insert 2x M12x40 bolts, washers, and nyloc nuts into the lower front mount. Use an angled wrench to reach the inner nuts.
15. If some trimming is needed front to rear, the slider can be adjusted with packers in the front or moving the rear vertically. The alignment with the sill can be measured off the bottom of the door with the door slightly open. Clearance should be 10-15mm OA.

To adjust the rear, with the u-bolt slightly loose, the slider can be adjust up and down and then while slider is in the correct position, the u-bolt can be tightened to hold the slider at that position.

To adjust the front, the slider needs to be removed and 4mm packers can be used underneath the upper area of the front mount.

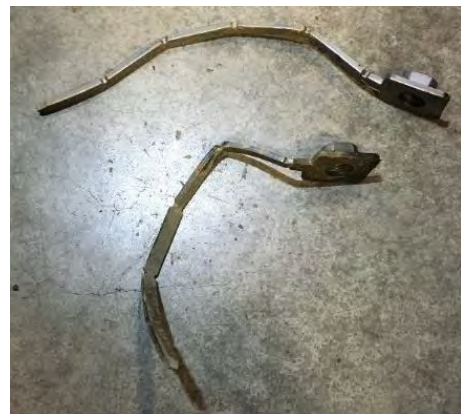
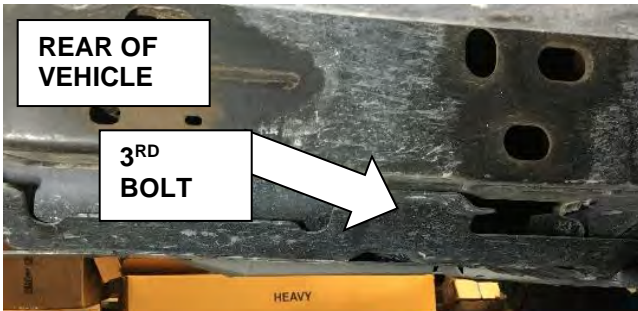


16. Moving to the right side, if your vehicle is equipped with a gas tank skid, loosen all the bolts holding it on, but don't completely remove.

17. Remove the 1st and 3rd bolts that are located on the frame, holding the gas tank skid on. The front bolt will be re-used for the middle slider mount.

18. Repeat steps 6-8 for the right side.

19. Repeat step 11 for the right side, bending nut wands as shown.






20. Find the OE hole on the outside of the rail and insert nut wands. If your vehicle was equipped with a gas tank skid, place the skid over the middle mount and u bolt and tighten all bolts with the exception of the 3rd

21. Torque all bolts on the sliders and chassis.

 M8 - 22 Nm.  M10 - 44 Nm.

 M12 - 77 Nm.

FITTED PRODUCT

