



Ford Pocket Style[®] Fender Flares Rear Pair

Rear Part #20084-02

Rev-6 11/19/2013

For complete fitment info visit : www.bushwacker.com

STEP 1 – PRIOR TO INSTALLATION

- A) Bushwacker only** approves installing the flares according to these written instructions with the hardware provided. **WARNING:** Failure to install according to these instructions will invalidate the warranty. This includes, but is not limited to using alternative installation methods, hardware, or materials. **DO NOT USE:** Loctite, SuperGlue, or similar products on the hardware or the flares.
- B) Fit:** Verify the fit of the flares to vehicle. (Some filing, sanding, or cutting may be necessary to ensure proper fit).
- C) Painting:** (Optional) if paint is desired it must be done prior to installing flares on vehicle. Clean outer surface with a good grade degreaser. **DO NOT USE LACQUER THINNER OR ENAMEL REDUCER AS A DEGREASER.** Wipe outer surface thoroughly with a tack rag prior to paint. Application of plastic adhesion promoter for ABS plastic as per your paint system manufacturer's recommendations is required. Paint flares using a high quality enamel, or polyurethane automotive paint. If painting edge trim (not recommended), use a flex additive.
- D) Performance:** Using larger Tires may increase the area required to turn the vehicle. Some Tire/Rim combinations may require lowering bump stops and or installing steering stops to prevent tire from contacting flare.
- E) Exhaust System:** Modifications may be necessary to maintain a minimum 4" clearance between flares and exhaust pipes. (Exhaust gases should not vent directly onto flares)
- F) Metal Protection:** All exposed fasteners and bare metal should be treated with rust resistant paint **BEFORE** installing flares. Spray inner fender wells with undercoating **AFTER** flare attachments have been completed.
- G) Decals:** Flares may interfere with existing decals on vehicle. If you wish, remove decals prior to installation of flares.

TOOLS FOR EASY INSTALLATION:

- Utility Knife
- #2 Phillips Driver
- Socket Wrench
- 7/32" Socket
- 3/8" Socket
- 5/32" Allen Wrench

LIMITED LIFETIME WARRANTY AGAINST ANY MANUFACTURING DEFECTS

- To claim a warranty, you must provide Proof of Purchase.

Included in Hardware Kit:

- | | | | | | | |
|---|---|---|--|---|---|---|
| 1. 
CL1-0005,
Dacromet "U"
Spring Clip,
8 pcs | 2. 
SW1-0050,
10 x 5/16 Phillips
Truss Screw,
8 pcs | 3. 
MT1-0014,
1" x 1.5" x .01"
Black Tab,
8 pcs | 4. 
SW1-0038,
1/4-20 x 1-1/2"
SS Btnhd Screw,
4 pcs | 5. 
SP1-0008,
1/2" x .260" x 3/4"
Spacer,
4 pcs | 6. 
WA1-0017,
1/4 x 1-1/4" Black
Fender Washer
4 pcs | 7. 
NU1-0015,
1/4-20 SS
Nylock Nut,
4 pcs |
| 8. 
WA1-0010,
.327 x .625 x .31
SS Washer,
4 pcs | 9. 
SW1-0067,
5/16 x 18 x 3/8"
SS Torx Screw,
20 pcs | 10. 
WA1-0012,
.320 x .700 x .03
SS Washer,
20 pcs | 11. 
NU1-0019,
5/16-18 Jam Fin.
Nylock Nut,
20 pcs | 12. 
SW1-0052,
T-45 Torx Bit,
1 pc | 13. 
ET1-0002,
Edge Trim Tool,
1 pc | 14. 
GP1-0005,
Large Wiper Style
Edge Trim,
191 inches |

STEP 2 - EDGE TRIM INSTALLATION

A. Peel two to three inches of red vinyl backing away from Edge Trim (GP1-0005) tape. Applying the adhesive side of the edge trim to the inner side of the flare, affix the edge trim to the top edge of the flare (the portion that comes in contact with the vehicle).

B. Press edge trim into place along the top edge of the flare in one-foot increments, pulling red vinyl backing free as you continue to work your way around the top edge of the flare.



Pocket Hardware Installation:



Put a Washer (WA1-0012) on each Bolt (SW1-0059).

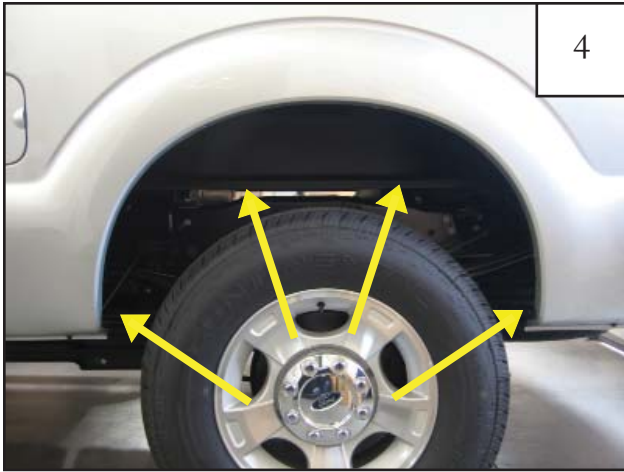


Put each Bolt/Washer combination through a pocket hole in the flare, Bolt head and Washer on the outside.



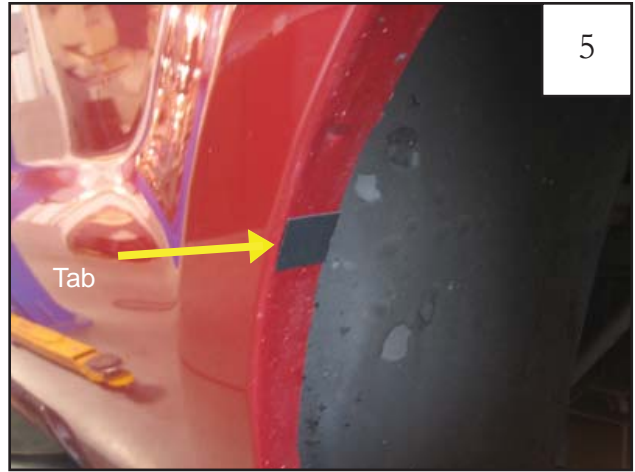
Place a Nut (NU1-0019) over the end of each Bolt and tighten, using a 1/2" wrench for the Nut and the supplied Torx Bit (SW1-0052) for the Bolt. Repeat for remaining pockets.

Rear Flare Installation Procedures (Driver's Side):



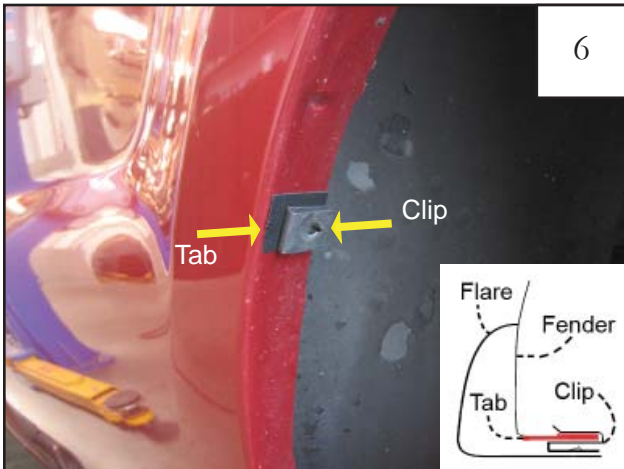
4

Hold flare to vehicle and ensure that four holes in flares line up with four factory holes in the fender.



5

Install a Tab (MT1-0014) centered over each of the four holes noted in Step 4, and wrapped around the metal lip.



6

Install a Clip (CL1-0005) over each of the Tab (MT1-0014) installed in Step 5.



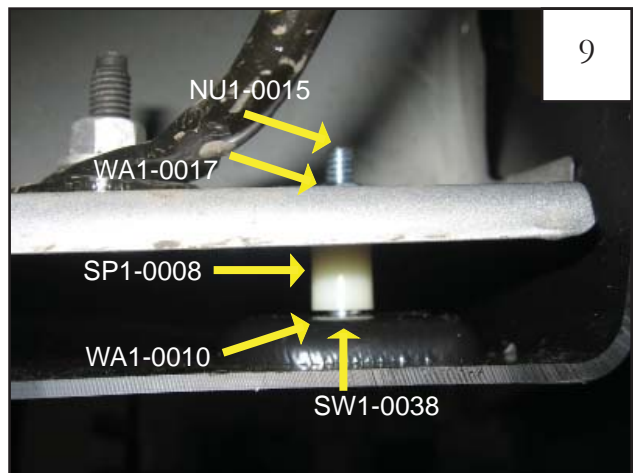
7

Position flare on fender and, starting with the two top holes, install Screw (SW1-0050)s through holes in flare and into clips with a #2 Phillips screwdriver.



8

Using a 5/32" Allen Wrench and 3/8" socket, install bolt, Washer (WA1-0010), Spacer (SP1-0008), Washer (WA1-0017), and Nut (NU1-0015) through bottom two holes in flare and into factory holes. See step 9.



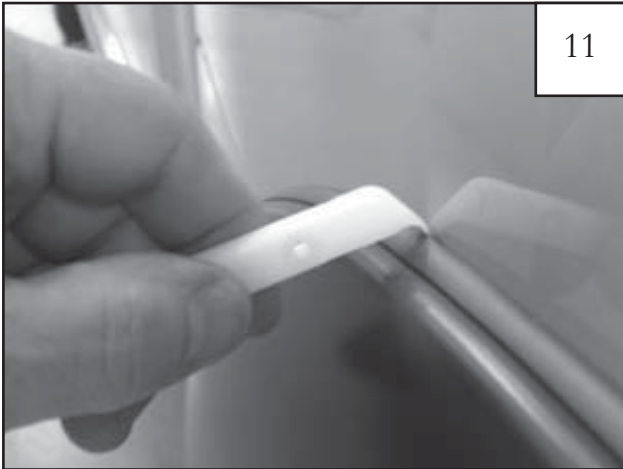
9

Start Screw (SW1-0038) from the bottom through the Washer (WA1-0010) and into flare. Install Spacer (SP1-0008) between flare and sheet metal. Slide a Washer (WA1-0017) then a Nut (NU1-0015) over the end of the Screw (SW1-0038).



Completed rear flare installation.

Edge Trim Tool Procedures:



Using supplied Edge Trim Tool (ET1-0002), seat edge trim against vehicle by hooking curved end under edge trim at one end of flare. Next, slide around outer edge of flare to the other end.



Using flat end of supplied Edge Trim Tool (ET1-0002), seat edge trim against flare by inserting straight end between edge trim and flare at one end. Next, slide around entire edge to the other end.