



STEP 1 – PRIOR TO INSTALLATION

- A) Bushwacker only** approves installing the flares according to these written instructions with the hardware provided. **WARNING:** Failure to install according to these instructions will invalidate the warranty. This includes, but is not limited to using alternative installation methods, hardware, or materials. **DO NOT USE:** Loctite, SuperGlue, or similar products on the hardware or the flares.
- B) Fit:** Verify the fit of the flares to vehicle. (Some filing, sanding, or cutting may be necessary to ensure proper fit).
- C) Painting:** (Optional) if paint is desired it must be done prior to installing flares on vehicle. Clean outer surface with a good grade degreaser. **DO NOT USE LACQUER THINNER OR ENAMEL REDUCER AS A DEGREASER.** Wipe outer surface thoroughly with a tack rag prior to paint. Application of plastic adhesion promoter for ABS plastic as per your paint system manufacturer's recommendations is required. Paint flares using a high quality enamel, or polyurethane automotive paint. If painting edge trim (not recommended), use a flex additive.
- D) Performance:** Using larger Tires may increase the area required to turn the vehicle. Some Tire/Rim combinations may require lowering bump stops and or installing steering stops to prevent tire from contacting flare.
- E) Exhaust System:** Modifications may be necessary to maintain a minimum 4" clearance between flares and exhaust pipes. (Exhaust gases should not vent directly onto flares)
- F) Metal Protection:** All exposed fasteners and bare metal should be treated with rust resistant paint **BEFORE** installing flares. Spray inner fender wells with undercoating **AFTER** flare attachments have been completed.
- G) Decals:** Flares may interfere with existing decals on vehicle. If you wish, remove decals prior to installation of flares.

RAM Extend-A-Fender® Fender Flares Set of 4

Set Part #50914-02

Rev-4 10/24/2013

For complete fitment info visit : www.bushwacker.com

TOOLS FOR EASY INSTALLATION:

- Utility Knife
- #2 Phillips Driver
- Socket Wrench
- 8 mm Socket

LIMITED LIFETIME WARRANTY AGAINST ANY MANUFACTURING DEFECTS

- To claim a warranty, you must provide Proof of Purchase.

Included in Hardware Kit:

- | | | | | | | | | | |
|----|---|----|---|----|---|----|---|----|--|
| 1. |  | 2. |  | 3. |  | 4. |  | 5. |  |
| | CL1-0022,
#10 "U" Clip, | | ET1-0002,
Edge Trim Tool, | | GP1-0005,
Large Wiper Style
Edge Trim,
315 Inches | | SW1-0056,
#8 x 3/4"
PH Screw,
24 pcs | | MT1-0014,
1" x1.5" x.01"
Black Tab,
6 pcs |
| | 6 pcs | | 1 pc | | | | | | |

STEP 2 - EDGE TRIM INSTALLATION

- A) Peel two to three inches of red vinyl backing away from Wiper Style Edge Trim tape. Applying the adhesive side of the edge trim to the inner side of the flare, affix the edge trim to the top edge of the flare (the portion that comes in contact with the vehicle).
- B) Press edge trim into place along the top edge of the flare in one-foot increments, pulling red vinyl backing free as you continue to work your way around the top edge of the flare.



Front Flare Installation Procedures (Passenger's Side):



This vehicle has two types of front bumper, metal and plastic. Installation of this flare is not affected by which bumper the vehicle has. Pictured here is the metal bumper.



Remove three factory installed screws with 8mm socket wrench.



2011 Models Only (Optional): If you encounter a fit problem, remove inner piece at bottom rear of wheel well.



Install #10 U-Clips at these locations. See step 5.



Install two tabs (MT1-0002) over factory holes. There are two factory holes near the rearward arrow. The correct hole for install is the one more toward the front of the vehicle.



Install #10 U-Clip over existing factory holes. There are two holes at the top center location. The hole for proper installation is the one toward the front of the vehicle. **NOTE:** The clip may fit over the lip loosely. This can be fixed by pinching the clip more tightly to the vehicle.



Hold flare to vehicle and start supplied #8x3/4" Washer Panhead Screws with a Phillips Screwdriver. *Do not tighten.*



Hold flare to the vehicle and start additional supplied screws with a Phillips Head Screwdriver through the factory holes. *Do not tighten.*



Press firmly on flare and tighten all screws.



Completed front flare installation.

Rear Flare Installation Procedures (Passenger's Side):



2012 Models Only (Optional): If you encounter a fit problem, remove inner piece at bottom rear and front of wheel well.



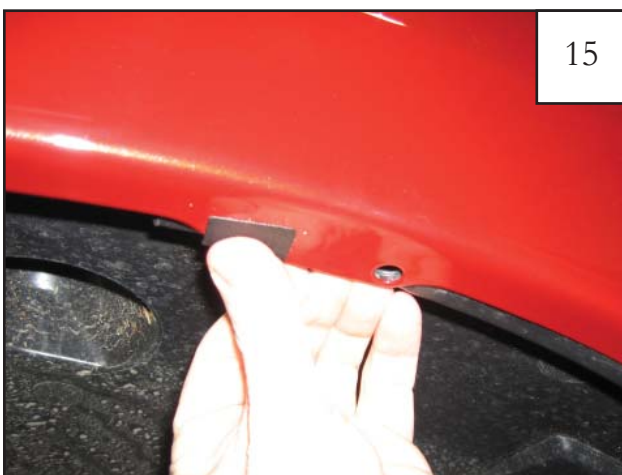
2012 Models Only (Optional): Remove inner piece at bottom rear of wheel well using a pry tool.



Remove six factory installed screws using an 8mm socket wrench. X's indicate a factory screw that will not be removed.



Install #10 U-Clip in this location. See steps 15 & 16.



Install plastic tab over existing factory hole.

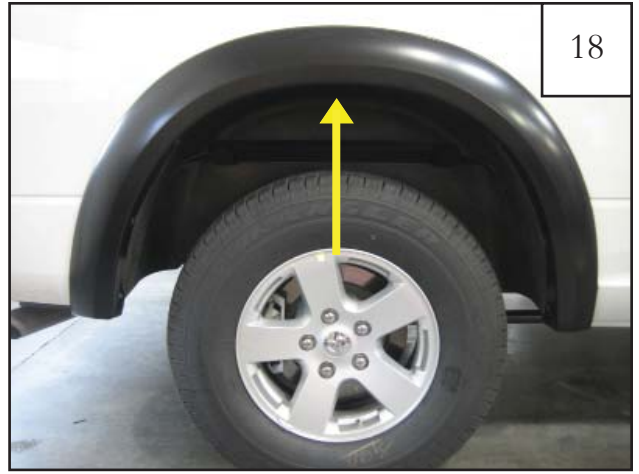


Install #10 U-Clip (CL1-0022) over tab and existing factory hole.



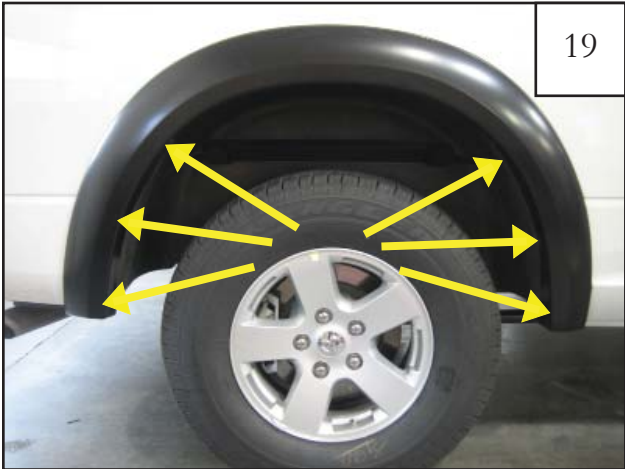
17

Using an awl or similar pointed tool, poke a hole through plastic tab using the U-Clip hole as a guide.



18

While holding flare onto vehicle, start a #8 x 3/4" Washer Panhead Screw using a Phillips screwdriver. *Do not tighten.*



19

Hold flare in place while you start additional supplied screws using a Phillips Head Screwdriver. *Do not tighten.*



20

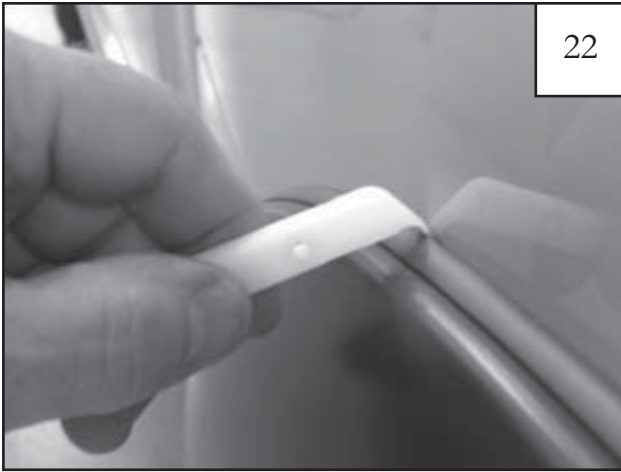
Press firmly on flare and tighten all screws.



21

Completed rear flare installation.

Edge Trim Tool Procedures:



Using supplied Edge Trim Tool, seat Wiper Style Edge Trim against vehicle by hooking curved end under edge trim at one end of flare. Next, slide around outer edge of flare to the other end.



Using flat end of supplied Edge Trim Tool, seat edge trim against flare by inserting straight end between edge trim and flare at one end. Next, slide around entire edge to the other end.