



# X-ACT CONTOUR

## FLOOR LINERS

### CARE AND USE INSTRUCTIONS – PN:53498

Thank you for selecting X-act Contour™ Front Floor Liners from Husky Liners Inc. Your new front floor liners are custom molded to fit your specific vehicle's floor board. The liners are made to take the place of your factory floor mats. **For correct fit, it is necessary to remove the factory floor mats before installing your new floor liners.** However, do not remove the factory-installed carpeting.

Your liners are made from an engineering resin that is lightweight and extremely tough and durable. The easiest way to clean your liners is with a damp cloth or sponge and soap and water. Windex®, 409® and ArmorAll® type cleaners work as well.



LEFT OR DRIVER



RIGHT OR PASSENGER

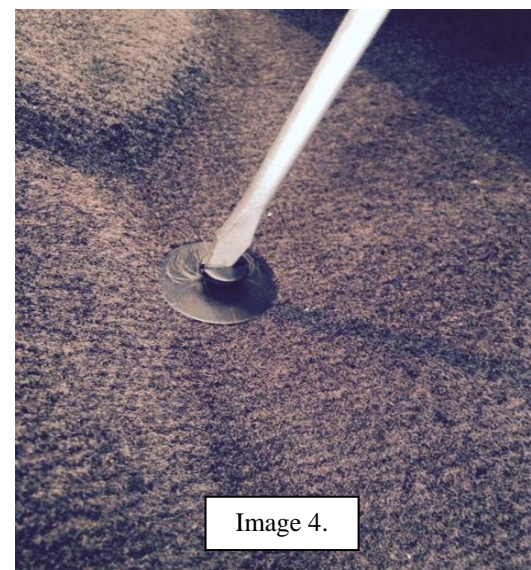
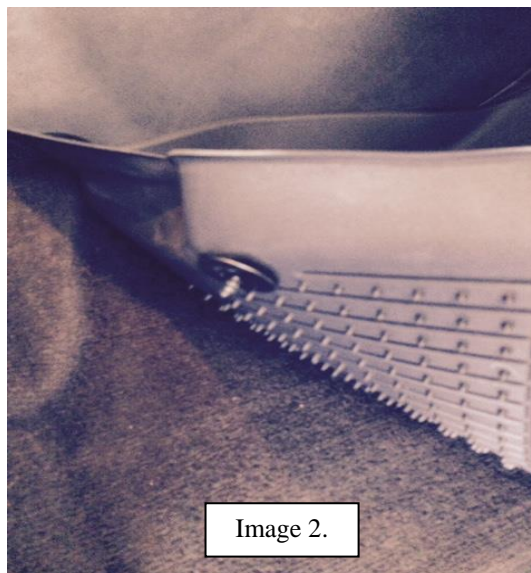
TO INSTALL DRIVER'S SIDE LINER SIMPLY POSITION LINER OVER EXISTING RETAINER AND PRESS DOWN TO SEAT LINER OVER THE RETAINER. INCLUDED IN YOUR PACKAGING IS AN ADDITIONAL RETAINING POST FOR THE PASSENGER SIDE. SEE INSTALLATION DETAILS ON THE BACK OF THIS PAGE.



## HUSKY FLOOR LINER RETAINING CLIP INSTALLATION INSTRUCTIONS

**YOUR NEW LINER SET INCLUDES OUR NEW FLOOR LINER RETAINING CLIP SYSTEM. THIS RETAINING CLIP GIVES MOVEMENT RESTRAINT WHILE KEEPING SPILLS AND DEBRIS TRAPPED INSIDE THE LINERS. TO INSTALL THE HUSKY® LINER RETAINING CLIP ON THE PASSENGER SIDE LINER, SIMPLY FOLLOW THE INSTRUCTIONS BELOW:**

- 1) Pre fit your new X-act Contour floor liner in your vehicle (Image 1).
- 2) Insert the screw-in carpet retention screw into the bottom of the X-act Contour liner (Image 2).
- 3) Press down on the liner to pre-mark the carpet screw into the carpet (Image 3).
- 4) Screw the carpet screw into the carpet with a flat blade screwdriver (Image 4).
- 5) Press the X-act Contour liner over the top of the carpet screw post (Image 3).



IF YOU HAVE ANY QUESTIONS REGARDING THE INSTALLATION OF YOUR HUSKY® LINER RETAINING CLIPS, JUST GIVE US A CALL MONDAY THROUGH FRIDAY FROM 8:00 AM – 5:00 PM CENTRAL TIME AT 800-344-8759 OR E-MAIL US AT: [contactus@huskyliners.com](mailto:contactus@huskyliners.com).



# X-ACT CONTOUR

## FLOOR LINERS

### CARE AND USE INSTRUCTIONS

---

Thank you for selecting a X-act Contour™ Floor Liner from Husky Liners Inc. Your new second seat liner is custom molded to fit your Ford F150 Super Crew truck. The liner is made to take the place of your factory floor mats. **For correct fit, it is necessary to remove the factory floor mats before installing your new floor liners.** However, do not remove the factory-installed carpeting.

Your liner is made from an engineering resin that is lightweight and extremely tough and durable. The easiest way to clean your liner is with a damp cloth or sponge. If using a cleaner, 409® or Glass Plus® work well. Use of Armor All®, Son-of-a-Gun® or similar items is discouraged as these products make the liner slick.

### INSTALLATION INSTRUCTIONS FOR YOUR FORD F150 SUPER CREW TRUCK SECOND SEAT FLOOR LINER



TO EASE INSTALLATION OF YOUR NEW SUPERCREW LINER, MOVE BOTH FRONT SEATS TO THEIR MOST FORWARD POSITION. ONCE LINER IS INSTALLED, REPOSITION THE SEATS AS DESIRED.

IF YOUR TRUCK IS EQUIPPED WITH A 40/20/40 SPLIT BENCH FRONT SEAT, YOU WILL NEED TO TRIM YOUR LINER TO ACHIEVE THE PROPER FIT. SEE IMAGE ON BACK FOR TRIMMING DETAILS. TRIM LINER LEAVING AN APPROXIMATE 1/4" LIP AROUND THE CUPHOLDER PROFILE AS SHOWN IN THE IMAGES ABOVE AND ON BACK PAGE. A UTILITY KNIFE OR HEAVY SHEARS WORK WELL FOR TRIMMING.



