



# WEATHERBEATER™ FLOOR LINERS

PT #95281

## CARE AND USE INSTRUCTIONS

---

Thank you for selecting a WeatherBeater® Floor Liner from Husky Liners. Your new front floor liners are custom molded to fit your specific vehicle. The liners are made to take the place of your factory floor mats. ***For correct fit, it is necessary to remove the factory floor mats before installing your new floor liners.*** However, *do not remove the factory-installed carpeting.* Your liners are made from an engineering resin that is lightweight and extremely tough and durable. The easiest way to clean your liners is with a damp cloth or sponge. If using a cleaner, 409® or Glass Plus® work well. Use of Armor All®, Son-of-a-Gun® or similar items is discouraged as these products make the liners slick.

## INSTALLATION INSTRUCTIONS FOR YOUR FRONT FLOOR LINERS



LEFT OR DRIVER'S SIDE



RIGHT OR PASSENGER'S SIDE

TO EASE INSTALLATION OF YOUR FRONT LINERS, MOVE BOTH FRONT SEATS TO THEIR MOST REARWARD POSITION. NEXT, REMOVE ANY EXISTING FLOOR MATS AND INSTALL THE LINERS, POSITIONED AS SHOWN ABOVE. TAKE CARE THE LINERS ARE SECURED TO THE FACTORY FLOOR MAT RETENTION HOOKS LOCATED IN THE VEHICLE FLOOR. ONCE THE LINERS ARE INSTALLED, MOVE THE FRONT SEATS TO THEIR DESIRED LOCATIONS.



## WEATHERBEATER™ FLOOR LINERS

PT #95281

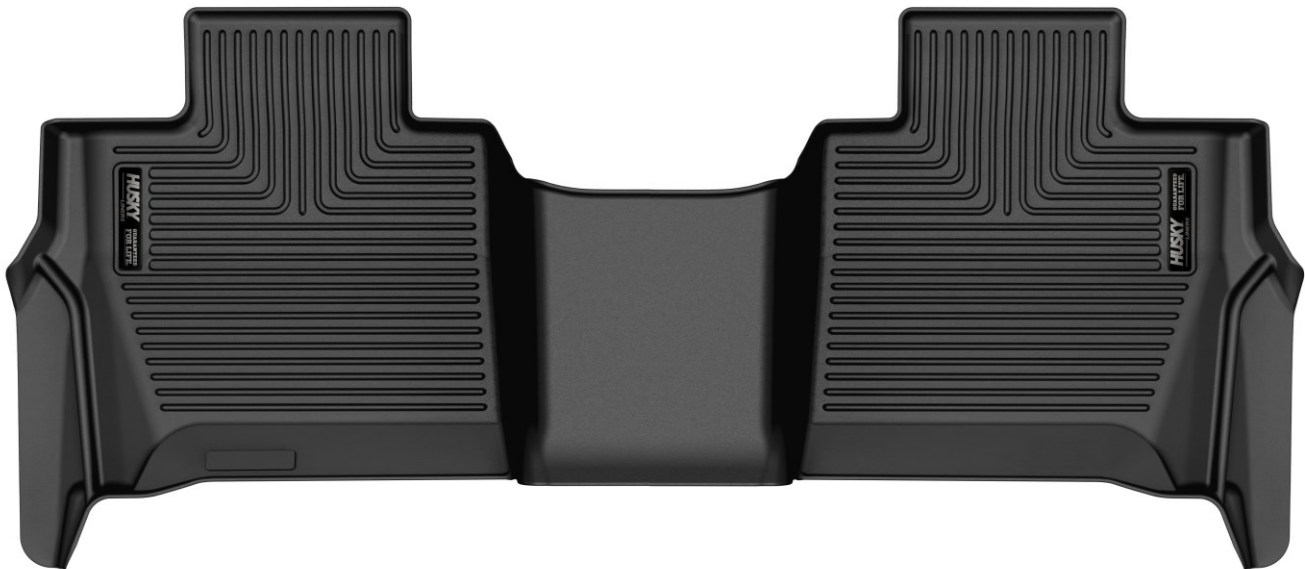
### CARE AND USE INSTRUCTIONS

---

Thank you for selecting a WeatherBeater™ Floor Liner from Husky Liners. Your new second seat liner is custom molded to fit your specific vehicle. The liner is made to take the place of your factory floor mats. **For correct fit, it is necessary to remove the factory floor mats before installing your new floor liners.** However, do not remove the factory-installed carpeting.

Your liner is made from an engineering resin that is lightweight and extremely tough and durable. The easiest way to clean your liner is with a damp cloth or sponge. If using a cleaner, 409® or Glass Plus® work well. Use of Armor All®, Son-of-a-Gun® or similar items is discouraged as these products make the liner slick.

### INSTALLATION INSTRUCTIONS FOR YOUR SECOND SEAT FLOOR LINER



TO INSTALL YOUR SECOND SEAT LINER, FIRST MOVE YOUR FRONT ROW SEATS COMPLETELY FORWARD. THEN, INSTALL YOUR NEW LINER, POSITIONING IT IN THE VEHICLE AS SHOWN ABOVE. LASTLY, REPOSITION YOUR FRONT ROW SEATS AS DESIRED.