

INSTALLATION MANUAL

571501

This is the first of two manuals required to complete this installation. The second manual is included with your side bars / running boards.

Level of Difficulty

Easy

Parts List

1	Driver / left mounting bracket
1	Passenger / right mounting bracket
4	Washer, M12
4	Nylock nut, M12

Tools Required

Ratchet	Socket set
Torque wrench	Socket extension
Wrench set	Panel trim removal tool

Torque Specifications

M10 bolt	45 ft-lbs.
M12 bolt	80 ft-lbs.

Use above torque setting unless otherwise noted

Product Photo



Left / driver side



Right / passenger side

NOTICE

Before you begin installation, read all instructions thoroughly.

Proper tools will improve the quality of installation and reduce the time required.

To help prevent damage to the product or vehicle, refer to the specified torque specifications when securing hardware during the installation process.

Maintenance

Mild automotive detergent may be used to clean the product. Do not use dish detergent, abrasive cleaners, abrasive pads, wire brushes or other similar products that may damage the finish.

Product Registration and Warranty

CURT Group stands behind our products with industry-leading warranties.

Provide feedback and help us to improve our products by registering your purchase at:

warranty.curtgroup.com/surveys

Step 1

Locate and remove the six screws and two clips securing the factory plastic bumper in place.

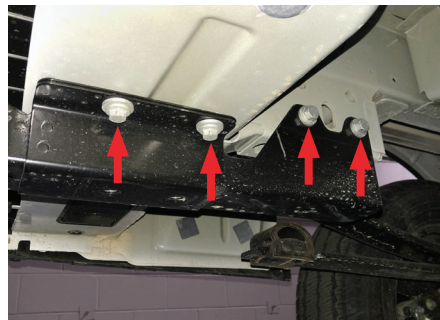


Step 2

On the driver side of the vehicle, locate and remove the six factory bolts that secure the OEM bumper to the vehicle frame. Set these bolts aside, they will be reused.

Repeat on the passenger side of the vehicle and remove the bumper and bumper cover as one assembly.

Note: If the vehicle is equipped with a hitch, it will need to be removed prior to bumper removal. The hitch will not be able to be reinstalled

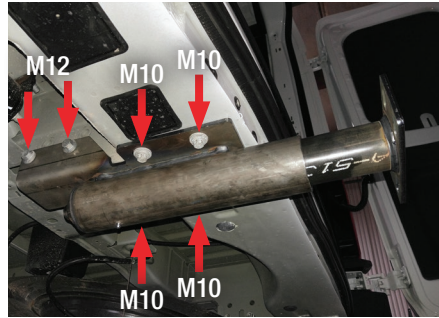


Step 3

Attach the driver / left shock assembly to the vehicle frame using four M10 bolts and two M12 bolts removed in step 2 along with two of the provided M12 washers and lock nuts.

Snug the hardware, but do not fully tighten.

Repeat on the passenger side of the vehicle.



Step 4

Secure the impact bumper step to the shock bracket assemblies using the 1/2" hardware provided with your impact bumper. Beginning with the shock assemblies, tighten all fasteners to the recommended torque specifications listed on page one.

NOTICE

To complete the installation, refer to the manual included with your impact bumper step.

