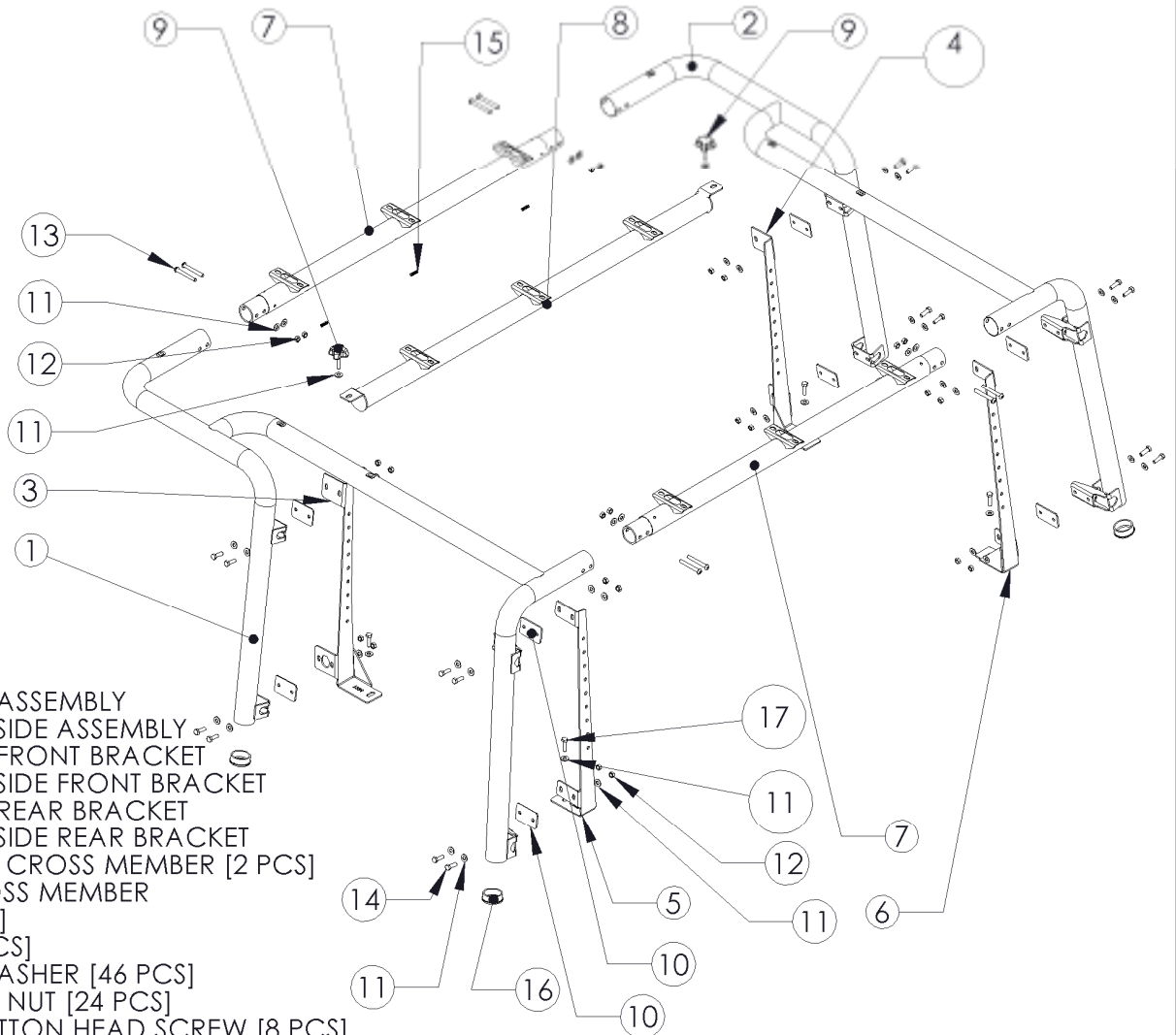


131894

2011+ JK 4 DR ROOF RACK KIT

**OFF CAMBER  
FABRICATIONS**

by: **MBRP** INC.



1. DRIVER SIDE ASSEMBLY
2. PASSENGER SIDE ASSEMBLY
3. DRIVER SIDE FRONT BRACKET
4. PASSENGER SIDE FRONT BRACKET
5. DRIVER SIDE REAR BRACKET
6. PASSENGER SIDE REAR BRACKET
7. FRONT/REAR CROSS MEMBER [2 PCS]
8. CENTER CROSS MEMBER
9. KNOB [2 PCS]
10. GASKET [8 PCS]
11. 5/16" FLAT WASHER [46 PCS]
12. 5/16" NYLOC NUT [24 PCS]
13. 5/16"x2.5" BUTTON HEAD SCREW [8 PCS]
14. 5/16"x1" HEX BOLT [16 PCS]
15. GROMMET [6 PCS]
16. TUBE CAP [4 PCS]
17. M8x30 HEX BOLT [4PCS]

## PLEASE READ BEFORE STARTING INSTALLATION

While MBRP Inc. has made every effort to ensure that all components of this kit are of superior quality and properly packaged, it is the installer's responsibility to ensure the following before starting:

- that ALL components shown above are present.
- that ALL mating components fit together.
- that there are no damaged components.
- that the kit you have purchased is appropriate for your year and model of vehicle.
- that the kit will not interfere with any modifications previously installed or planned.
- that you have read and understand these instructions.

If you have any questions or are uncertain about any aspect of the installation of this kit on your vehicle please contact your dealer before commencing installation.

## 2011+ Jeep JK 4dr Roof Rack Kit



Figure 1



Figure 2

1. Mark the holes to be drilled in the factory hardtop using the supplied **Hole Templates**. There is a front and rear template. LH and RH are mirror image of each other and will use the same template. Trim the template and tape it to the outside of the Hardtop. **ENSURE THAT THE TEMPLATES ARE ALINED WITH THE HARDTOP AS DESCRIBED. THE REAR TEMPLATE MUST BE ALIGNED WITH THE BOTTOM EDGE OF THE HARDTOP, AND THE REAR 'SEAM' OF THE HARDTOP. THE FRONT TEMPLATE MUST BE ALIGNED WITH THE BOTTOM EDGE OF THE HARDTOP AND THE DOORJAM EDGE OF THE HARDTOP. THE WINDOW PROFILES ARE USED AS A REFERENCE ONLY AND SHOULD NOT BE USED TO POSITION THE TEMPLATE OVER THE PROCEDURE OUTLINED ABOVE.** Once the **Hole Templates** are properly positioned, use a 1/16" bit to drill a pilot hole through the template and through the Hardtop. Transfer the Hole Templates to the other side and repeat. Once all pilot holes are drilled, remove the templates and drill the holes out with a 3/8" bit.

2. Remove the 4 corner factory hard top mounting bolts, leaving the center 2 in place. Loosely attach the **Driver and Passenger side, Front and Rear mounting Brackets** using the four supplied **M8x30 Hex Bolts**. The brackets may not exactly line up with the previously drilled holes. The brackets are flexible and can be moved to line up with the holes. This is normal.

**Refer to Figure 1.**

**Note: All fasteners in this kit are Stainless Steel. Be sure to lubricate all threads with a general purpose oil before assembly to help prevent galling of the threads.**

3. Install the **Driver Side Assembly** by first pre-assembling with the supplied **5/16"x1" Button Head Screws**. Be sure to place a **5/16" Washer** under the head of the screws. Next slide the supplied **Upper and Lower Gaskets** over the threads of the screws. The Gasket will help hold the screws in place while installing the assembly. **Refer to Figure 2.**



**Figure 3**



**Figure 4**



**Figure 6**



**Figure 7**

4. Lift the **Driver Side Assembly** into position on the side of the hardtop. Line up the holes and slide the **5/16" x 1" Button Head Screws** through the hard top, through the holes in the **Inner Brackets**, and secure using the supplied **5/16" Nyloc nuts**. Do not fully tighten the bolts yet. You will need two people for this step. **Refer to Figures 3 and 4.**

5. Install the **Front and Rear Crossmembers** by sliding the ends of the **Crossmembers** into the ends of the **Driver Side Assembly**. Ensure the accessory mounting pads are facing up, the light wiring holes are facing rearward on the **Front Crossmember**, forward on the **Rear Crossmember**, and the bolt holes in the **Crossmember** line up with the holes in the **Driver Side Assembly**. Secure the **Crossmember** by inserting the supplied **5/16" x 2.5" Button Head Screws**, **5/16" Nyloc Nuts** and **Washers**. No washers are required under the head of the screws. Do not tighten yet. **Refer to Figures 6 and 7.**



Figure 8



Figure 9

6. Preassemble the **Passenger Side Assembly** as shown in Step 5. Lift the assembly into position as before. Be sure to align the **Crossmembers** with the **Passenger Side Assembly** as well. Some adjustment may be required to get everything to line up and slide into position; this is why all fasteners should be left loose. Secure the **Passenger Side Assembly** to the hardtop using the supplied **5/16" x 1" Button Head Screws, 5/16" Nyloc Nuts and Washers**. Secure the **Crossmembers** to the **Passenger Side Assembly** with the supplied **5/16" x 2.5" Button Head Screws, 5/16" Nyloc Nuts and Washers**, as in Step 5. 2 people will be required for this step as well. **Refer to Figure 8.**

7. Install the **Center Crossmember** by choosing a location and securing with the supplied **Knobs and 5/16" Washers**. **Refer to Figure 9.**

8. Tighten all fasteners to no more than 12 ftlbs. Be careful to not over tighten, damage to the finish and/or components may result.



Congratulations! You are finished. We are sure that you will enjoy this **Off Camber Fabrications** product by **MBRP Inc.**