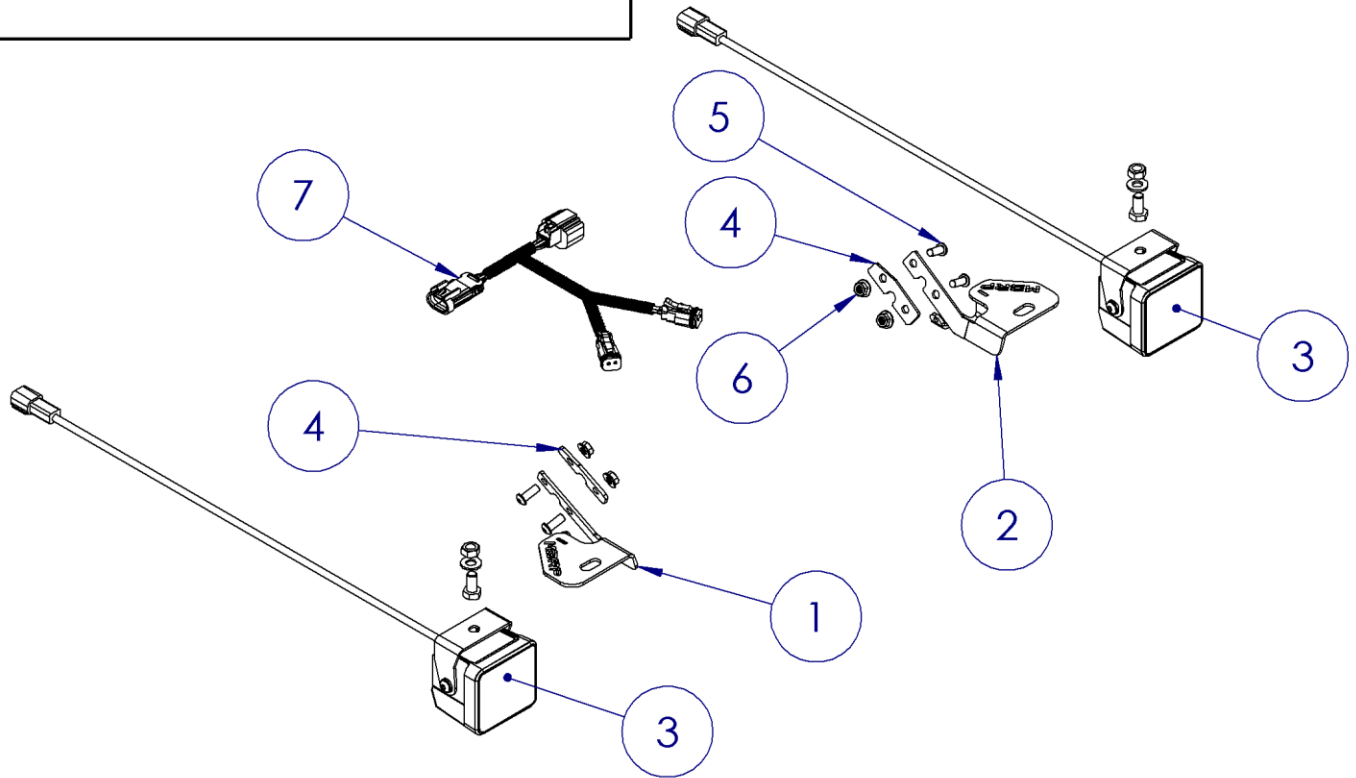


SL1001

2017-2023 SKI-DOO/LYNX GEN 4
ACCESSORY LIGHT KIT

MBRP®



ITEM	DESCRIPTION	QTY
1	LIGHT BRACKET RIGHT	1
2	LIGHT BRACKET LEFT	1
3	LIGHT ASSEMBLY	2
4	BACK PLATE	2
5	M6X16 SCREW	4
6	M6X1.0 FLANGE NUT	4
7	WIRING HARNESS	1

Refer to this LOT NUMBER when contacting customer service: _____

PLEASE READ BEFORE STARTING INSTALLATION

While MBRP has made every effort to ensure that all components of this system are of superior quality and properly packaged, it is the installer's responsibility to ensure the following before installation:

- that ALL components shown above are present.
- that ALL mating components fit together.
- that there are no damaged components.
- that the system you have purchased is appropriate for your vehicle year, model and configuration.
- that the system will not interfere with any modifications previously installed or planned.
- that you have read and understand these instructions.

If you have any questions or are uncertain about any aspect of the installation of this system to your vehicle please contact your dealer before commencing installation.

MBRP



Figure 1

1. Remove the windshield if applicable and the 2 screws securing the gauge pod to the hood. Lift the gauge pod and remove the storage bin.
2. Using a T25 Torx bit, remove the front screw of the air intake cover on each side,
Refer to Figure 1.



Figure 2

3. Temporarily install each light bracket using the previously removed torx fastener. Align the bracket level to the snowmobile and mark the two mounting hole locations and slot location on the headlight surround plastic.
Refer to Figure 2.

4. Remove the light brackets to avoid scratching the coating while drilling. Using a 9/32" drill bit or similar, drill the mounting hole locations.



Figure 3

5. Using a 1/8" drill bit or similar, drill a pilot hole for the slot. Carefully increase the slot hole up to 1/4". Take care near the edge of the plastic, too aggressive drilling may cause the plastic to crack at the edge. Use a utility knife to cut away the bottom of the hole to finish the slot.
Refer to Figure 2.

6. Unbolt the 8mm screw on top of the headlight surround plastic on each side.
Refer to Figure 3.



Figure 4

7. Assemble the brackets included with each **Light Assembly**.
8. Lift at the rear of the headlight surround plastic where the 8mm bolt was removed and slide the **Light Assembly** wiring under the plastic and into the previously created slot. Do this for both sides. The 8mm bolts can be reinstalled.
9. Using the **M6x16 Screws**, **M6 Flange Nuts**, torx fastener, and **Backing Plate**, install each light bracket. Do not overtighten the torx Fastener, it is threaded into plastic.
Refer to Figure 4.

MBRP

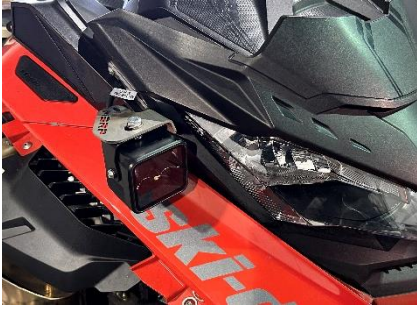


Figure 5

10. Using the remaining hardware included with the **Light Assembly**, install each light onto the **Light Brackets**. For the best appearance, it is recommended to install the bolt from the top and feed the nut under the bracket on the **Light Assembly**.

Refer to Figure 5.

11. Unplug the left-side headlight connector and install the **Wiring Harness** in between the headlight bulb and stock harness. Connect each **Light Assembly** to the outputs of the **Wiring Harness**.

12. Tuck the wiring neatly behind the headlight assembly and reinstall the storage box, gauge pod, and windshield if applicable.



Congratulations! You are ready to experience the improved performance of your **MBRP** Accessory Lighting kit. We know you will enjoy your purchase!