

ROUGH COUNTRY

SUSPENSION SYSTEMS®

GM 2007-13 CHEVY 1500/ 2011-14 2500/3500 DUAL FOG LIGHT MOUNTS

Thank you for choosing Rough Country for all your suspension and lighting needs.

Please read instructions before beginning installation. Check the kit hardware against the kit contents shown below. Be sure you have all needed parts and know where they go.

KIT CONTENTS

- (2) Light Brackets
- (4) 1/4" x 3/4" Stainless Carriage Bolts
- (4) 1/4" Stainless Flat Washers
- (4) 1/4" Stainless Lock Nuts
- (6) 5/16" x 1" Button Head Bolts
- (6) 5/16" Nylock Nuts
- (6) 5/16" Flat Washers
- (2) Wiring Harness Adapters

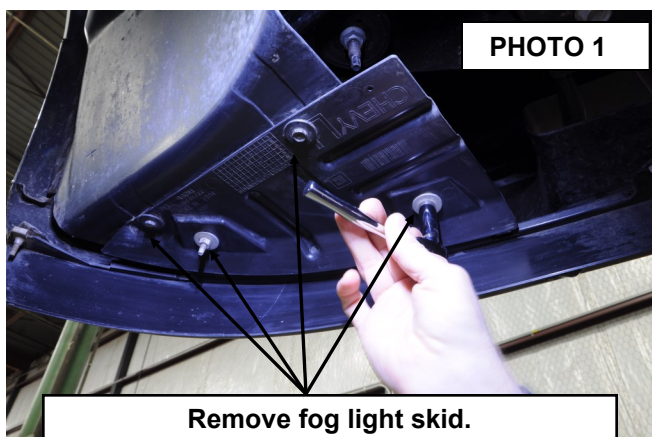


TOOLS NEEDED

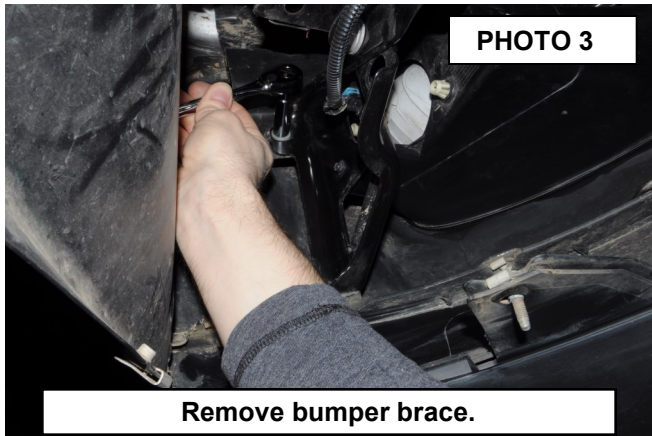
- 7mm Socket
- 10mm Socket
- 10mm Wrench
- 15mm Socket
- 3/16" Allen Wrench
- 7/16" Wrench
- 1/2" Wrench
- 11/32" Drill
- Drill Motor

2500/3500 INSTALLATION INSTRUCTIONS

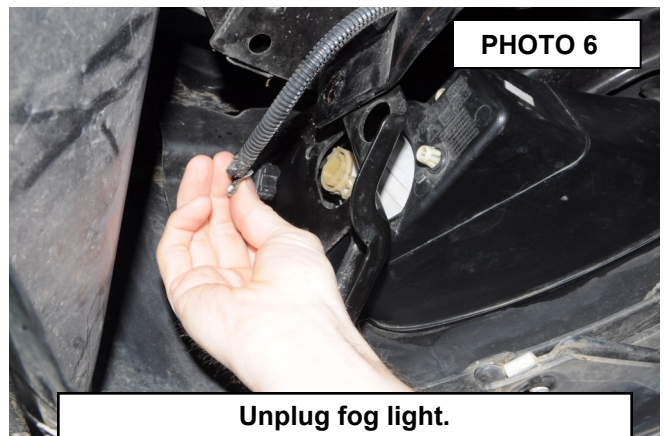
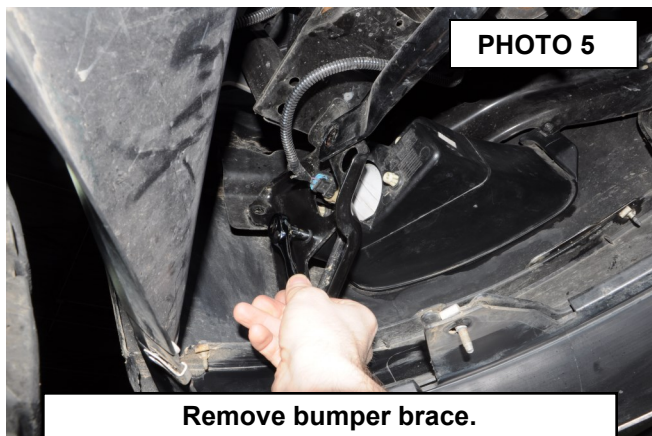
1. Using a 10mm socket to remove the 4 bolts holding the fog light skid. **See Photo 1**
2. Remove the skid and use 10mm wrench to remove the bumper brace. **See Photo 2.**



- Using a 10mm wrench, remove the (3) bolts holding the bumper bracket in place. **See Photo 3.**
- Using a 15mm wrench, remove the larger bolt on the bumper brace. **See Photo 4.**



- Using 7mm socket, remove the bolt holding the fog light bezel to the bumper brace. **See Photo 5.**
- Carefully unplug the fog light. **See Photo 6.**
- Using 7mm socket, remove the bolt securing the fog light bezel to the bumper. **See Photo 7.**



- Using a 10mm socket, release the clips holding the factory fog light in the bezel. **See Photo 8.**



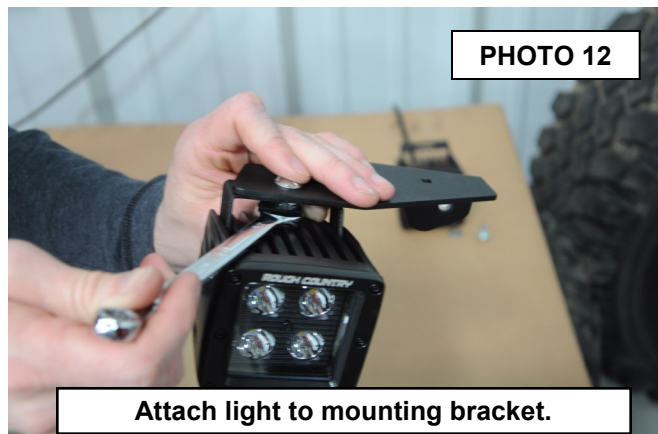
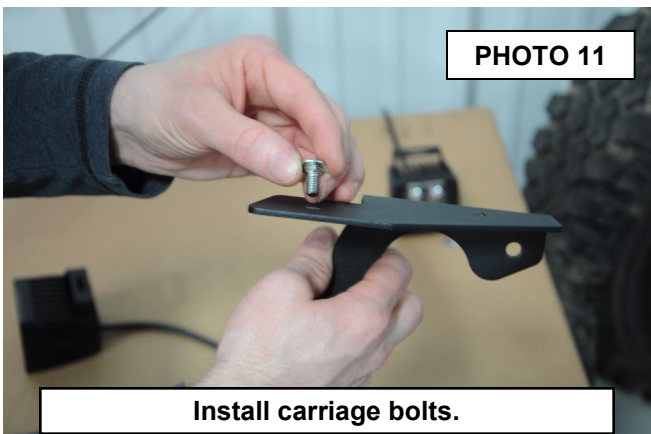
11. Remove fog light from bezel. **See Photo 9.**

12. Attach the supplied light mounting bracket to the light using supplied hardware and Allen Wrench. **See Photo 10.**



13. Insert supplied 1/4" x 3/4" carriage bolts into the square holes on the mounting bracket. **See Photo 11.**

14. Attach lights to bracket with supplied 1/4" x 3/4" carriage bolts, nuts, and washers. Tighten with 7/16" wrench. **See Photo 12.**

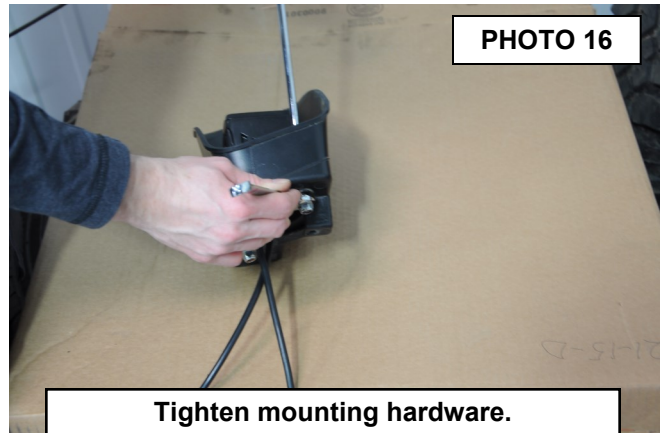


15. Insert 5/16" x 1" button head bolt into hole behind outside light. **See Photo 13.**



16. Insert light assembly into fog light bezel. **See Photo 15.**

17. Attach light assembly to bezel using the supplied 5/16" x 1" button head bolt, washer, and nut. Tighten using a 3/16" Allen and 1/2" wrench. **See Photo 16.**



18. Reverse steps 10-1 to install fog light bezel assembly into truck.

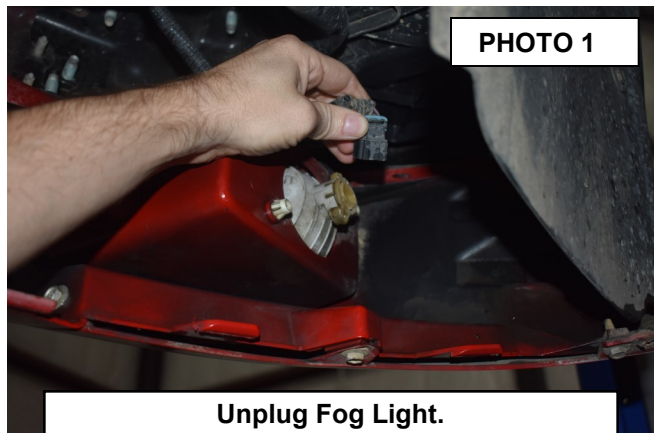
19. Repeat process on opposite side of truck.

20. Use supplied wiring adapters to connect RC fog lights to factory wiring harness on non-DRL lights or use supplied 2 to 1 adapter for DRL equipped lights and wire to a stand alone switch.

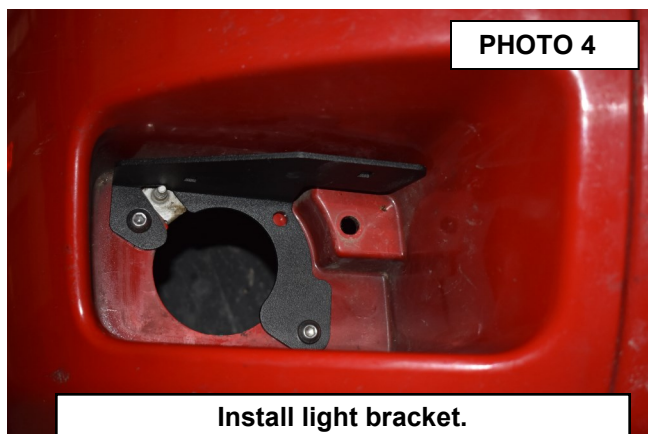


1500 INSTALLATION INSTRUCTIONS

1. Carefully unplug the fog light. **See Photo 1.**
2. Using a 10mm socket, release the clips holding the factory fog light in the bezel. **See Photo 2.**



3. Remove the factory fog light. **See Photo 3.**
4. Attach supplied light bracket to bezel, using the 2 existing holes in the bezel, using 2 of the supplied 5/16" x 1" button head bolt, washer, and nut. Tighten using a 3/16" Allen and 1/2" wrench. **See Photo 4.**



5. Mark the 3rd hole, remove the bracket and drill the bezel using a 11/32" drill. **See Photo 5.**
6. Attach the supplied light mounting bracket to the light using supplied hardware and Allen Wrench. **See Photo 6.**



7. Insert supplied 1/4" x 3/4" carriage bolts into the square holes on the mounting bracket. **See Photo 7.**
8. Attach lights to bracket with supplied 1/4" x 3/4" carriage bolts, nuts, and washers. Tighten with 7/16" wrench. **See Photo 8.**

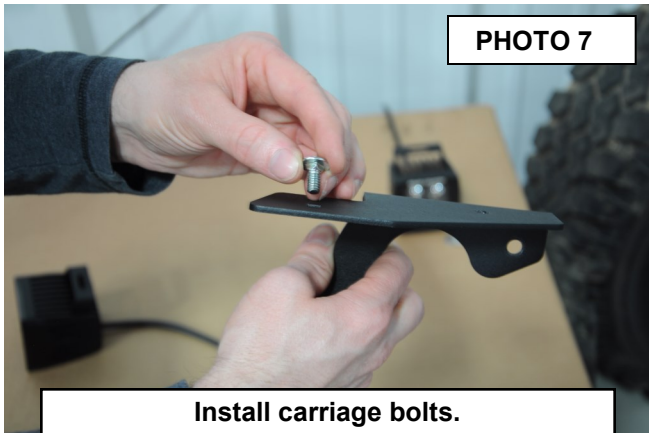


PHOTO 7

Install carriage bolts.

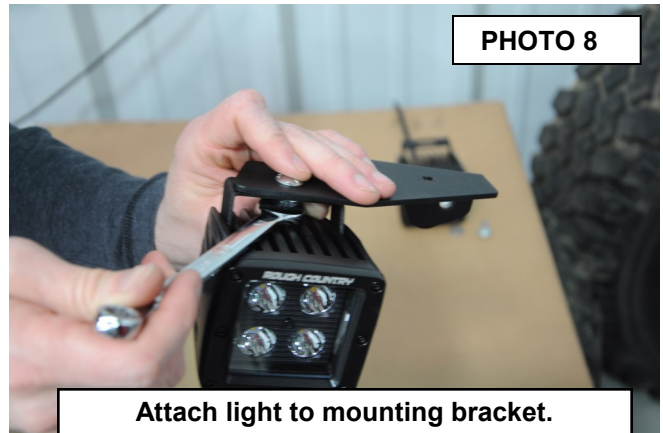


PHOTO 8

Attach light to mounting bracket.

9. Insert 5/16" x 1" button head bolt into hole behind outside light. **See Photo 9.**
10. Attach light assembly to bezel using the supplied 5/16" x 1" button head bolt, washer, and nut. Tighten using a 3/16" Allen and 1/2" wrench. **See Photo 10.**
11. Repeat process on opposite side of truck
12. Use supplied wiring adapters to connect RC fog lights to factory wiring harness on non-DRL lights or use supplied 2 to 1 adapter for DRL equipped lights and wire to a stand alone switch.



PHOTO 9

Install rear mounting bolt.



PHOTO 10

Install assembly in bumper.

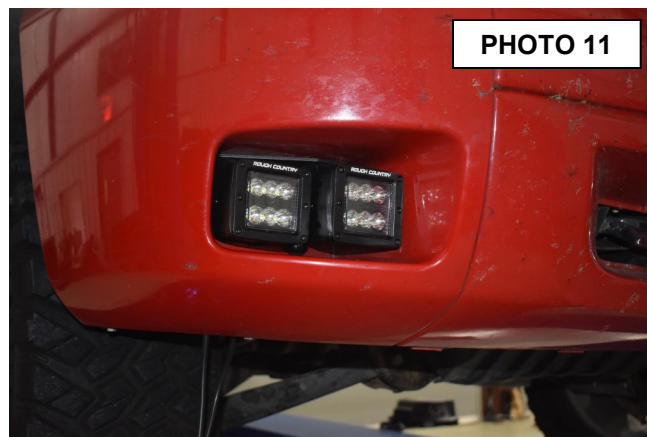


PHOTO 11

By purchasing any item sold by Rough Country, LLC, the buyer expressly warrants that he/she is in compliance with all applicable , State, and Local laws and regulations regarding the purchase, ownership, and use of the item. It shall be the buyers responsibility to comply with all Federal, State and Local laws governing the sales of any items listed, illustrated or sold. The buyer expressly agrees to indemnify and hold harmless Rough Country, LLC for all claims resulting directly or indirectly from the purchase, ownership, or use of the items.

