

T-REX

Billet Grilles

54198

2008 CADILLAC

CTS

UPPER CLASS SERIES MESH GRILLE

54198

2008 CADILLAC

CTS

Tools Required:

Phillips & Slotted Screw Drivers
7mm, 8mm & 10mm Socket

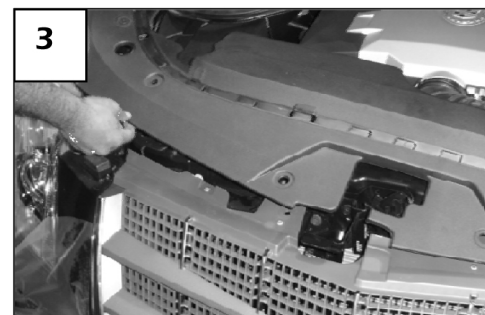
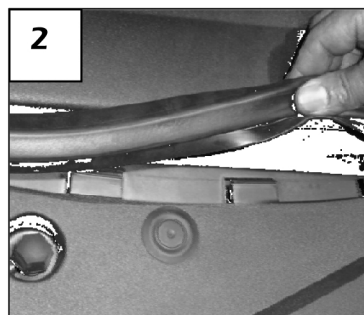
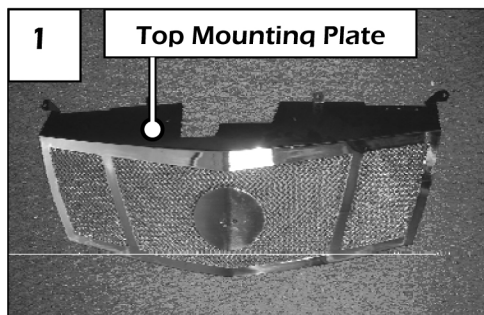
Parts List:

- 1 Upper Class Grille
- 1 Top Plate
- 6 6-32 Nylon Lock Nuts
- 1 Logo Plate
- 2 Push Type Retainers (19422)

- 6 #10 Washers
- 2 Custom Brackets



Read and understand instructions before attempting installation



Step 1

Install the top plate onto the four mounting studs [1]. Place the small washers and nylon lock nuts onto each stud. Center the top plate with the grille edges and tighten the nuts.



Install the logo plate onto the grille using the countersink screws, fender washers and nylon lock nuts. Adjust the plate in the center and tighten the hardware.

Install the factory grille emblems. The factory double sided tape may be re-used; however if the tape has lost tack, new tape or a small amount of super glue will help hold the logo.

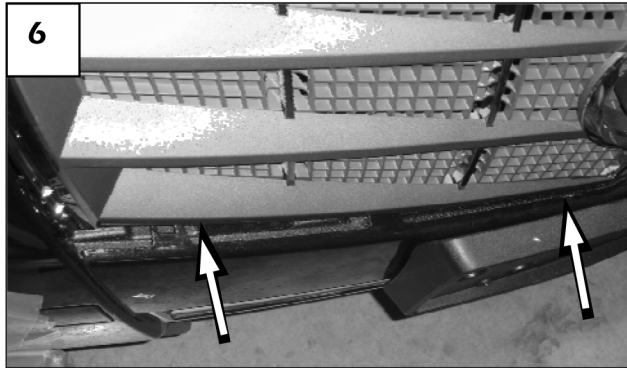
Step 2

Remove the rubber hood seal on the front side of the motor cover [2]. Unscrew the plastic clips and remove the plastic radiator cover over the grille [3]. Remove the two 10mm bolts along the top of the grille going into the core support [4].

54198

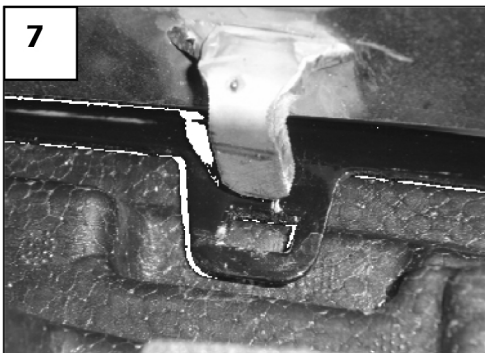
54198

54198 (Continued)



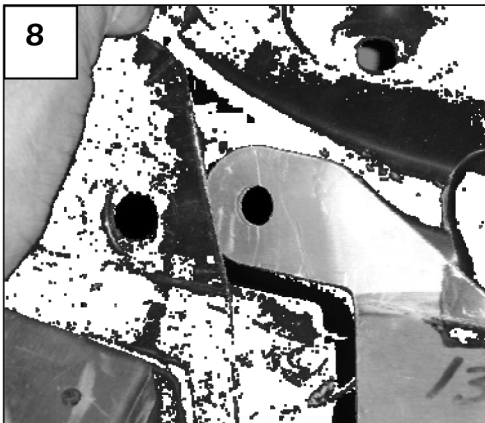
Step 3

The top corners of the grille and bumper cover are secured by a plastic pop clip; remove both. Pull grille forward to gain access behind grille.



Factory grille is retained by (10) metal clips [5]. Use a screwdriver to release each pressure clip.

Push the center bottom of grille towards the core support and pull the top outward to release the grille center [6]. Set the factory grille aside.



Step 4

Center the grille into the grille opening. The bottom tabs slide into the slots on the lower edge of the bumper [7].

Tuck the outer top plate mounting tabs behind the factory bumper cover mounting tabs [8]. Place a pop clip through the plastic and top plate of grille. Install the factory 10mm bolts to secure the top plate to the core support.

Step 5

Re-install the radiator cover and hood seal. *Thank you for purchasing a T-Rex billet grille. 12/5/07*